

PREPARATION

Firoblok fire protective sleeves are designed to maintain the rating of a fire rated wall, floor or ceiling where pipes, conduits or services are passing through. Test valid for concrete, blockwork and flexible walls. Cut a hole through the wall large enough to allow for the pipe / cables / services, plus the Firoblok sleeve.

INSTALLATION INSTRUCTIONS



1 Cut to depth of wall



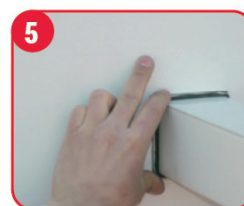
2 Cut along line, trim to fit



3 Wrap around service to a tight fit



4 Fix self adhesive flap



5 Push in level with wall

Application tools:	Suitable tools to create the hole, Stanley knife to cut open the Firoblok sleeve
Sizes:	15 standard dimensions from 18 mm – 215 mm diameter, other sizes made to measure
life span:	The Firoblok will provide protection for the lifetime of the building

CLEAN UP

Sweep up spills or dust with dustpan and brush. Cut offs can be taped together and reused.

AFTER CARE

Firoblok fire protective sleeve can be removed and replaced if new pipes or cables are added, or if service demands. Please make sure to have a Firoblok for the correct size of the opening.